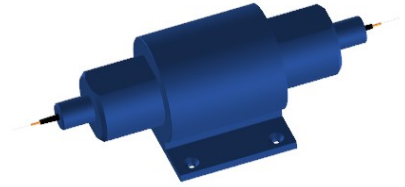


980 nm High Power Polarization Insensitive Isolator

Product Description

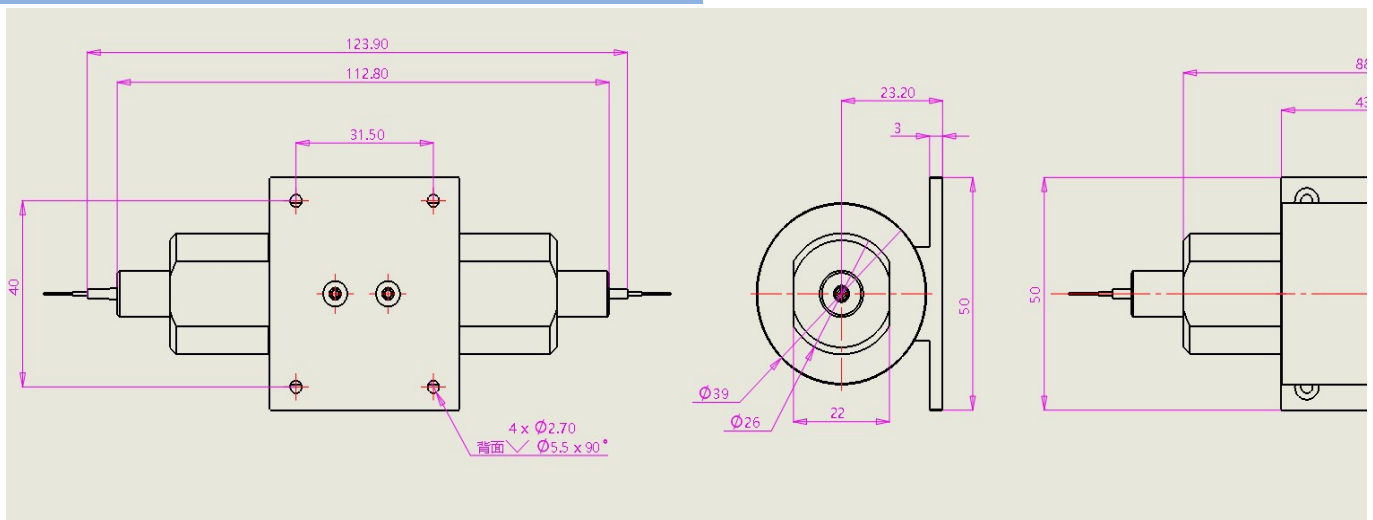
The 980 nm High Power Polarization Insensitive Isolator is characterized with low insertion loss, high isolation, high power handling, high return loss, excellent environmental stability and reliability. It is ideal for fiber laser and instrumentation applications.



Specifications

Parameter	Unit	Value
Center Wavelength (λ_c)	nm	980
Max.PDL	dB	0.15
Typ. Peak Isolation	dB	30
Min. Isolation 23 °C	dB	28
Typ. Insertion Loss, 23 °C	dB	1.0
Max. Insertion Loss, 23 °C	dB	1.2
Min. Return Loss (Input/Output)	dB	50/50
Max.Optical Power(continuous wave)	W	3
Max. Tensile Load	N	5
Fiber Type	-	HI1060 fiber
Operating Temperature	°C	0 to+50

Package Dimensions



Ordering Information
HI-①①-②-③③-④-⑤

HI	Wavelength	Grade	Pigtail Type	Fiber Length	Connector
	09-980nm SS-Specify	P-Premium	01 = Hi1060 Fiber 02 = 900 μm loose tube S - Specify	10=1m S=Specify	N=None FA=FC/APC SS=Specify